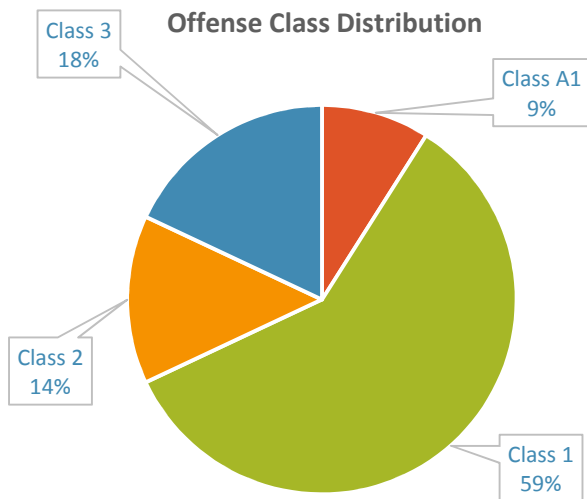




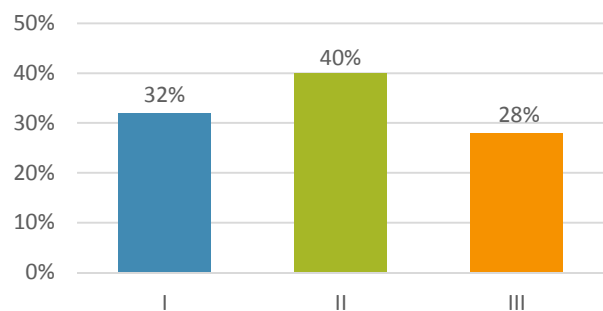
Quick Facts: Misdemeanor Convictions

FISCAL YEAR 2013/14

- ⇒ During FY 2013/14, 119,960 sentences for misdemeanor convictions were imposed under Structured Sentencing.
- ⇒ Fifty-nine percent of those misdemeanor convictions fell into Class 1.
- ⇒ Most misdemeanor convictions were for either a public order offense (41%) or a property offense (29%).
- ⇒ Thirty-one percent of misdemeanor convictions in FY 2013/14 received an Active punishment.



Prior Conviction Level Distribution



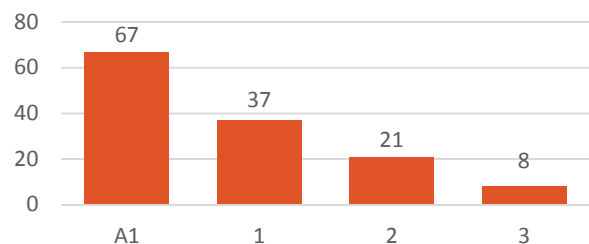
Top Misdemeanor Convictions by Offense Class

Class	Offense	N
A1	Assault on a Female	5,027
1	Driving While License Revoked	20,203
2	Resisting Public Officers	5,418
3	Possess Marijuana	5,794

Punishment

- Thirty-one percent of misdemeanor convictions resulted in an Active punishment, 2% resulted in an Intermediate punishment, and 67% resulted in a Community punishment.
- Convictions for Class A1 misdemeanors accounted for the largest percentage of Active sentences (35%) compared to the other offense classes.
- The overall average active sentence length (in days) was 32.3.
- Seventy-two percent of offenders with Active sentences received credit for time served, with an average credit of 15.3 days.

Average Active Sentence by Offense Class (in Days)



Type of Offense	N	%
Public Order	48,123	41%
Property	33,923	29%
Drug	22,241	19%
Person	12,666	11%

Offender Characteristics

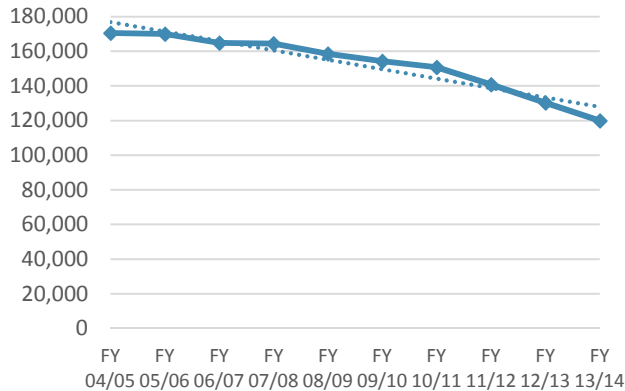
- The majority of misdemeanor offenders were male (75%).
- Forty-seven percent of misdemeanor offenders were White, 46% were Black, 3% were Hispanic, 2% were Native American, and 2% were Unknown.
- The average age of misdemeanor offenders was 33.
- Thirty-two percent of misdemeanor convictions were for offenders in Prior Conviction Level I (*i.e.*, offenders with zero prior conviction points).

Quick Facts: Misdemeanor Convictions

FISCAL YEAR 2004/05 – FISCAL YEAR 2013/14

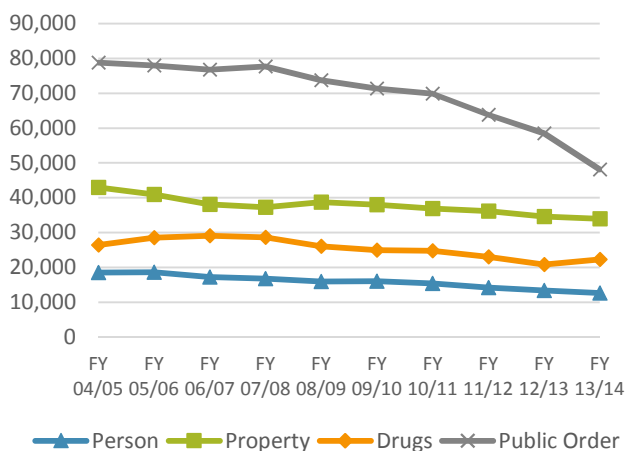
Misdemeanor convictions have decreased from FY 2004/05 to FY 2013/14. Over the past ten fiscal years, misdemeanor convictions have decreased nearly 30%, with a decrease of 8% over the past fiscal year.

Total Misdemeanor Convictions



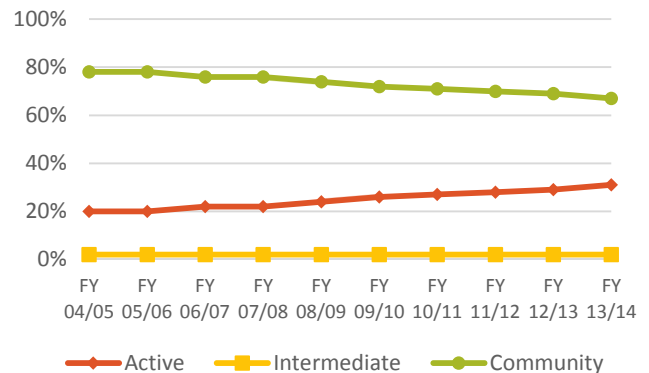
Public order and property crimes have comprised the majority of convicted misdemeanor offenses over the past ten fiscal years, with combined totals ranging between 70% and 73%, with the most substantial declines in public order offenses.

Misdemeanor Convictions by Type of Offense



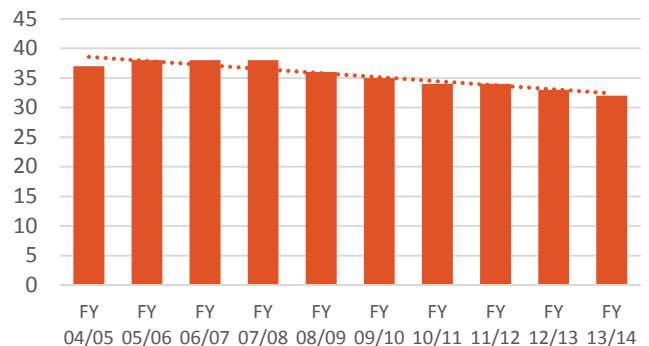
Over the past ten fiscal years, Active punishments have generally increased while Community punishments have generally decreased; Intermediate punishments have remained stable at 2% of misdemeanor convictions. Increases in Active punishments appear to be attributed to increased use of the statutory provision that allows the court to impose an active punishment if the term of imprisonment is equal to or less than the total time the offender has already spent in confinement pretrial.

Misdemeanor Convictions by Type of Punishment



The overall average active sentence imposed for all misdemeanor convictions sentenced to Active punishment has decreased over the past ten fiscal years, ranging from a high of 38 days to a low of 32 days.

Average Active Sentence (in Days)



Note: Figures in this publication generally exclude misdemeanor convictions that did not fit within the appropriate cell in the Misdemeanor Punishment Chart.

SOURCE: NC Sentencing and Policy Advisory Commission, FY 2004/05 – FY 2013/14 Statistical Report Data

NC Sentencing and Policy Advisory Commission
PO Box 2448
Raleigh, NC 27602

The Honorable W. Erwin Spainhour, Chairman
Susan Katzenelson, Executive Director

For the NC Sentencing and Policy Advisory Commission's *Structured Sentencing Statistical Report for Felonies and Misdemeanors* and all other publications, see the Commission's website: <http://www.nccourts.org/Courts/CRS/Councils/spac/>