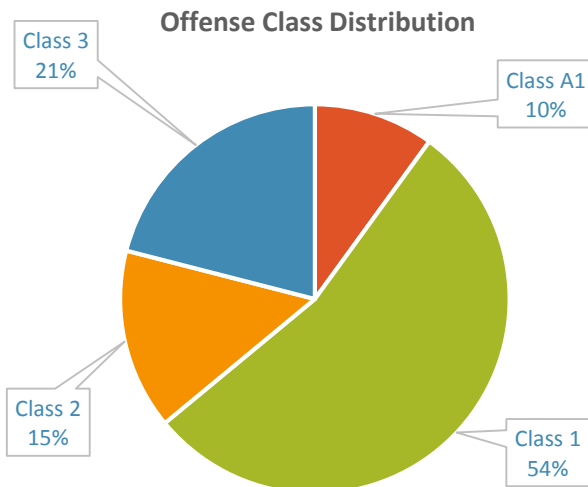




Quick Facts: Misdemeanor Convictions

FISCAL YEAR 2015

- ⇒ During FY 2015, 102,100 sentences for misdemeanor convictions were imposed under Structured Sentencing.
- ⇒ 54% of those misdemeanor convictions fell into Class 1.
- ⇒ Most misdemeanor convictions were for either a public order offense or a property offense (32% each).
- ⇒ 31% of misdemeanor convictions in FY 2015 received an Active punishment.

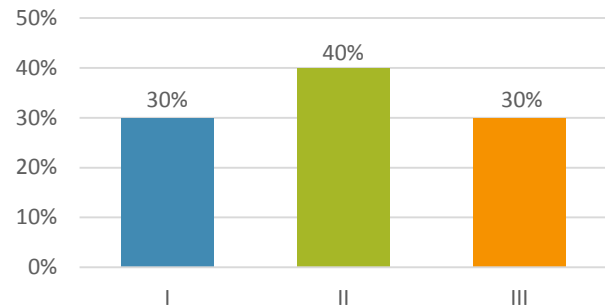


Type of Offense	N	%
Property	31,324	32
Public Order	31,168	32
Drug	22,936	24
Person	12,027	12

Offender Characteristics

- The majority of misdemeanor offenders were male (74%).
- 48% of misdemeanor offenders were White, 45% were Black, 3% were Hispanic, 2% were Native American, and 2% were Other.
- The average age of misdemeanor offenders was 33.
- 30% of misdemeanor convictions were for offenders in Prior Conviction Level I (i.e., offenders with zero prior conviction points).

Prior Conviction Level Distribution



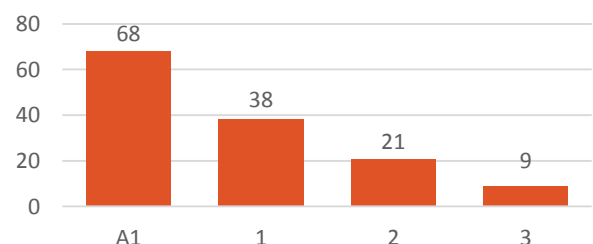
Top Misdemeanor Convictions by Offense Class

Class	Offense	N
A1	Assault on a Female	5,023
1	Larceny of Property	17,186
2	Resisting Public Officers	5,039
3	Possess Marijuana	6,347

Punishment

- 31% of misdemeanor convictions resulted in an Active punishment, 3% resulted in an Intermediate punishment, and 66% resulted in a Community punishment.
- Convictions for Class A1 misdemeanors accounted for the largest percentage of Active sentences (37%) compared to the other offense classes.
- The overall average active sentence length (in days) was 33.8.
- Nearly 80% of offenders with Active sentences received credit for time served, with an average credit of 17.8 days.

Average Active Sentence by Offense Class (in Days)

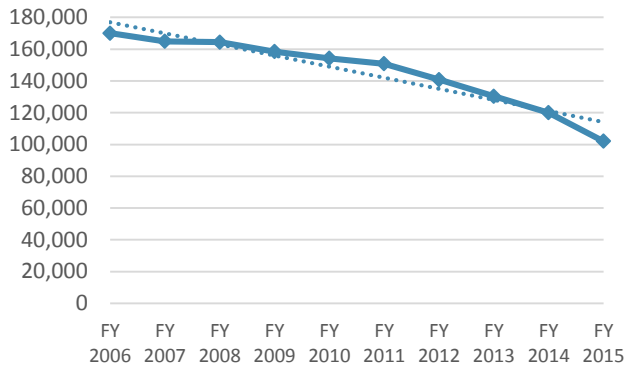


Quick Facts: Misdemeanor Convictions

FISCAL YEAR 2006 – FISCAL YEAR 2015

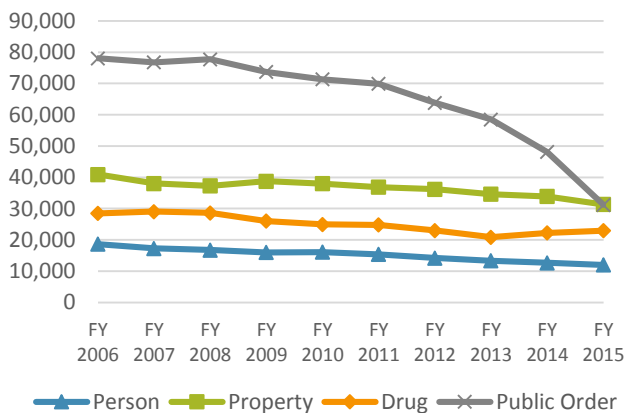
Over the past ten fiscal years, misdemeanor convictions have decreased 40%. The largest decrease in misdemeanor convictions from year-to-year occurred from FY 2014 to FY 2015 (15%) and can be attributed to the 2013 reclassification of a number of misdemeanor offenses to lower classes or to infractions.

Total Misdemeanor Convictions



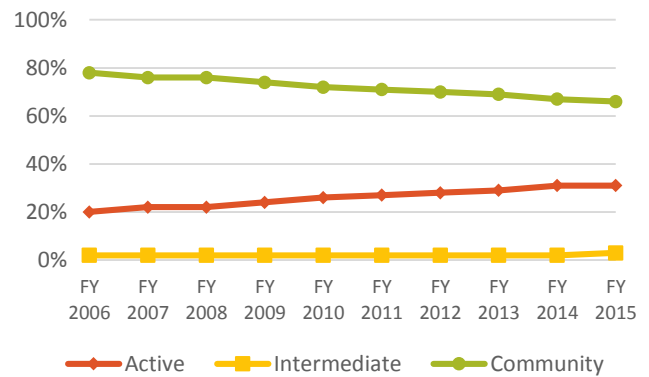
Public order and property crimes have comprised the majority of misdemeanor convictions over the past ten fiscal years, with combined totals ranging between 64% and 73%. Public order offenses have declined 35% over the past fiscal year, which is likely attributed to the 2013 reclassification described above.

Misdemeanor Convictions by Type of Offense



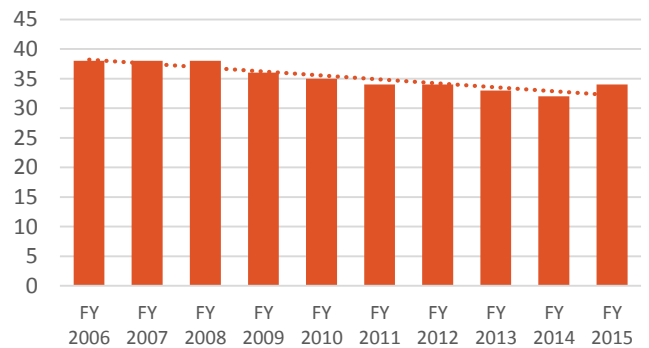
Over the past ten fiscal years, Active punishments have generally increased while Community punishments have generally decreased; Intermediate punishments have remained stable between 2% and 3% of misdemeanor convictions. Increases in Active punishments appear to be attributed to increased use of the statutory provision that allows the court to impose an active punishment if the term of imprisonment is equal to or less than the total time the offender has already spent in confinement pretrial.

Misdemeanor Convictions by Type of Punishment



The overall average active sentence imposed for all misdemeanor convictions sentenced to Active punishment has decreased over the past ten fiscal years, ranging from a high of 38 days to a low of 32 days.

Average Active Sentence (in Days)



Note: Figures in this publication generally exclude misdemeanor convictions that did not fit within the appropriate cell in the Misdemeanor Punishment Chart. SOURCE: NC Sentencing and Policy Advisory Commission, FY 2006 – FY 2015 Statistical Report Data

NC Sentencing and Policy Advisory Commission
 PO Box 2448 | Raleigh, NC 27602
 (919) 890-1470

The Honorable W. Erwin Spainhour, Chairman
Michelle Hall, Executive Director

For the NC Sentencing and Policy Advisory Commission's *Structured Sentencing Statistical Report for Felonies and Misdemeanors* and all other publications, see the Commission's website: <http://www.nccourts.org/Courts/CRS/Councils/spac/>.