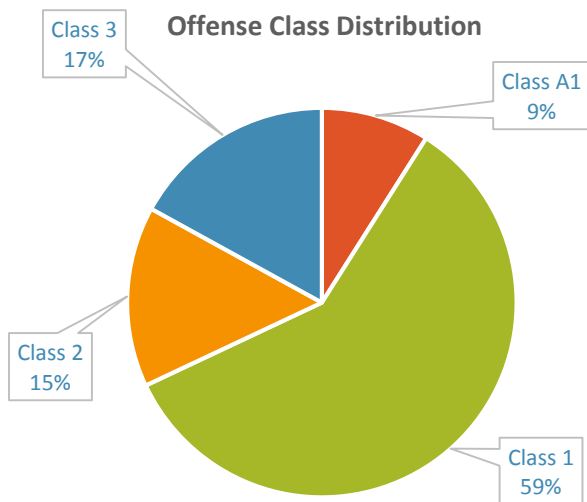




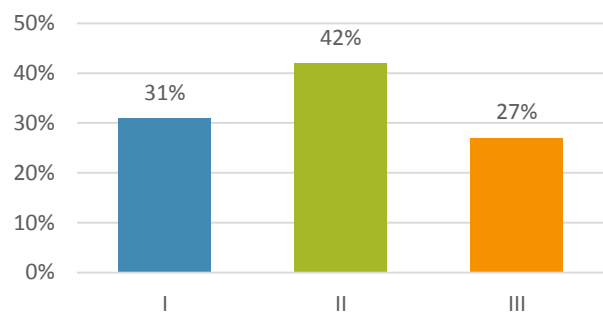
Quick Facts: Misdemeanor Convictions

FISCAL YEAR 2012/13

- ⇒ During FY 2012/13, 130,361 sentences for misdemeanor convictions were imposed under Structured Sentencing.
- ⇒ Nearly 60% of those misdemeanor convictions fell into Class 1.
- ⇒ Most misdemeanor convictions were for either a public order offense (45%) or a property offense (27%).
- ⇒ Twenty-nine percent of misdemeanor convictions in FY 2012/13 received an Active punishment.



Prior Conviction Level Distribution



Top Misdemeanor Convictions by Offense Class

Class	Offense	N
A1	Assault on a Female	5,585
1	Driving While License Revoked	24,515
2	Resisting Public Officers	5,827
3	Possess Marijuana	5,869

Punishment

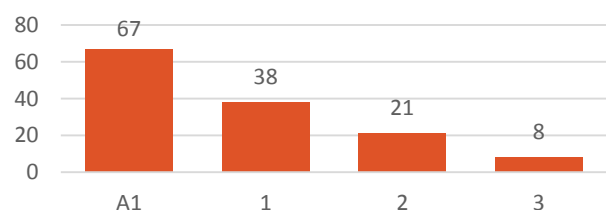
- Twenty-nine percent of misdemeanor convictions resulted in an Active punishment; 2% resulted in Intermediate punishment; and 69% resulted in Community punishment.
- Convictions for Class A1 misdemeanors accounted for the largest percentage of Active sentences (36%) compared to the other offense classes.
- The overall average active sentence length (in days) was 32.9.
- Seventy-one percent of offenders with Active sentences received credit for time served, with an average credit of 14.8 days.

Type of Offense	N	%
Public Order	58,521	45%
Property	34,598	27%
Drug	20,839	17%
Person	13,363	11%

Offender Characteristics

- The majority of misdemeanor offenders were male (75%).
- Forty-seven percent of misdemeanor offenders were Black; 46% were White; 3% were Hispanic; 2% were Native American; and 2% were Unknown.
- The average age of misdemeanor offenders was 33.
- Thirty-one percent of misdemeanor convictions were for offenders in Prior Conviction Level I (i.e., offenders with zero prior conviction points).

Average Active Sentence by Offense Class (in Days)

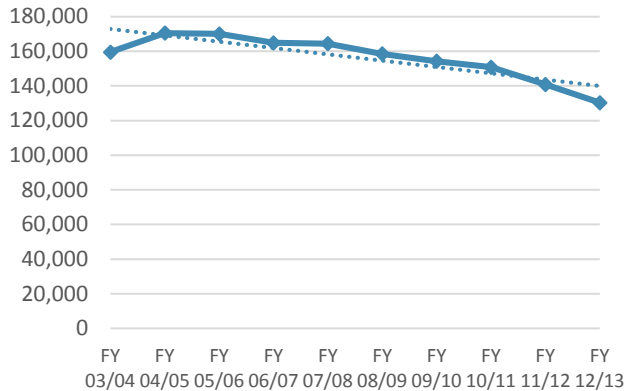


Quick Facts: Misdemeanor Convictions

FISCAL YEAR 2003/04 – FISCAL YEAR 2012/13

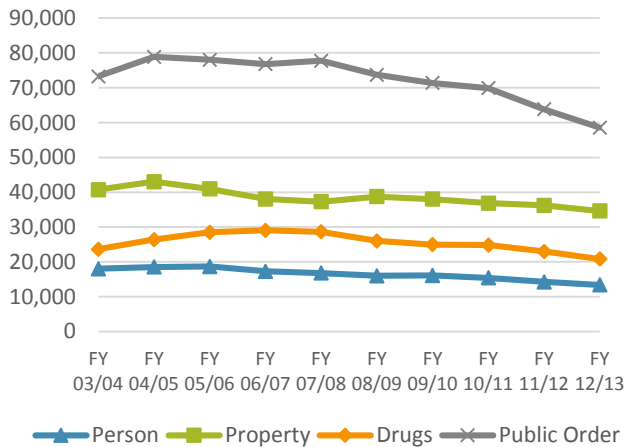
Misdemeanor convictions increased from FY 2003/04 to FY 2004/05 and have generally decreased in the following fiscal years. Over the past ten fiscal years, misdemeanor convictions have decreased over 18%.

Total Misdemeanor Convictions



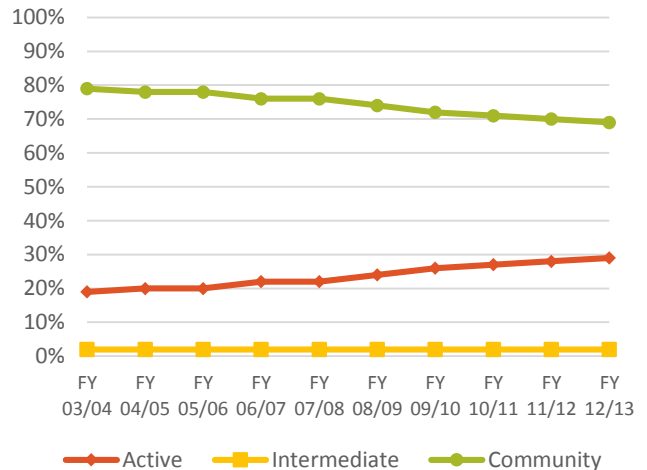
Public order and property crimes have comprised the majority of convicted misdemeanor offenses over the past ten fiscal years, with combined totals ranging between 71% and 73%.

Misdemeanor Convictions by Type of Offense



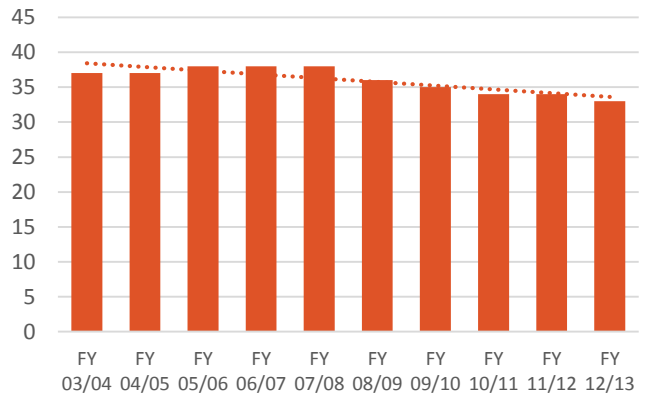
Over the past ten fiscal years, Active punishments have generally increased while Community punishments have generally decreased; Intermediate punishments have remained stable at 2% of misdemeanor convictions.

Misdemeanor Convictions by Type of Punishment



The overall average active sentence imposed for all misdemeanor convictions sentenced to Active punishment has decreased over the past ten fiscal years.

Average Active Sentence (in Days)



Note: Figures in this publication generally exclude misdemeanor convictions that did not fit within the appropriate cell in the Misdemeanor Punishment Chart.

SOURCE: NC Sentencing and Policy Advisory Commission, FY 2003/04 – FY 2012/13 Statistical Report Data

NC Sentencing and Policy Advisory Commission
 PO Box 2448
 Raleigh, NC 27605

The Honorable W. Erwin Spainhour, Chairman
Susan Katzenelson, Executive Director

For the NC Sentencing and Policy Advisory Commission's *Structured Sentencing Statistical Report for Felonies and Misdemeanors* and all other publications, see the Commission's website: <http://www.nccourts.org/Courts/CRS/Councils/spac/>