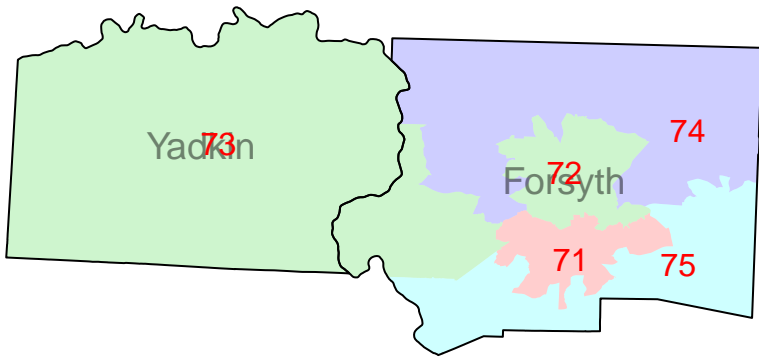
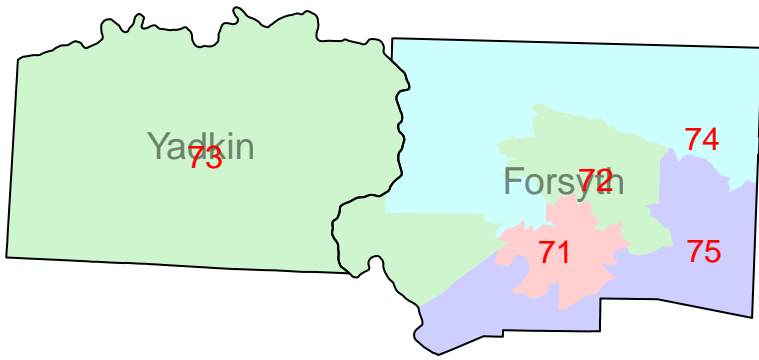
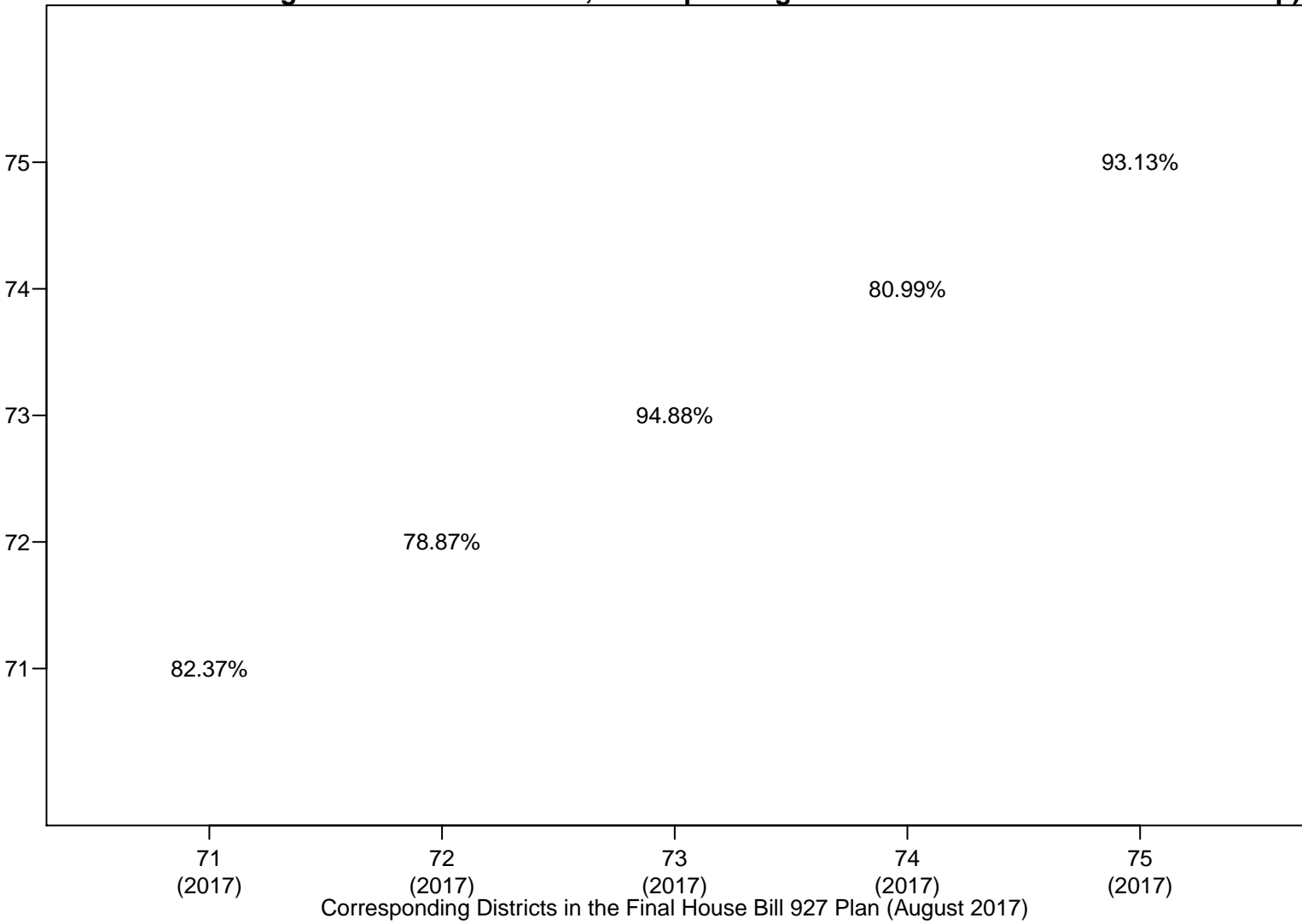


**Figure 8:
Forsyth–Yadkin County Grouping**

(Numbers indicate the percentage of population in each of Dr. Hofeller's draft 'J_25' districts that was also assigned to its most similar, corresponding district in the final House Bill 927 map)

Districts in Dr. Hofeller's Draft 'HOUSE_J_25_20170628' Map



**Plaintiffs' Exhibit
131**