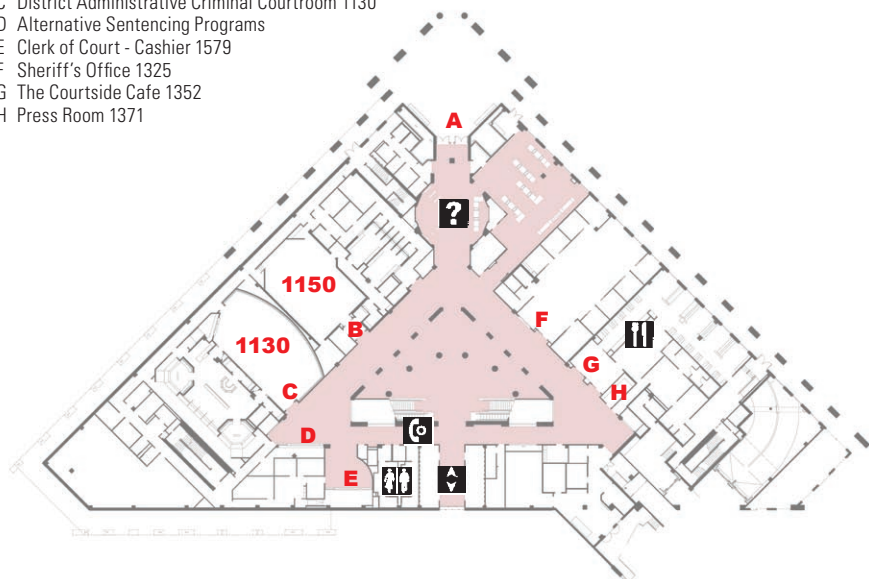


# MECKLENBURG COUNTY COURTHOUSE FLOOR DIRECTORY

## 1 McDowell Street Entry Level

- A McDowell Street Entry
- B First Appearance Courtroom 1150
- C District Administrative Criminal Courtroom 1130
- D Alternative Sentencing Programs
- E Clerk of Court - Cashier 1579
- F Sheriff's Office 1325
- G The Courtside Cafe 1352
- H Press Room 1371



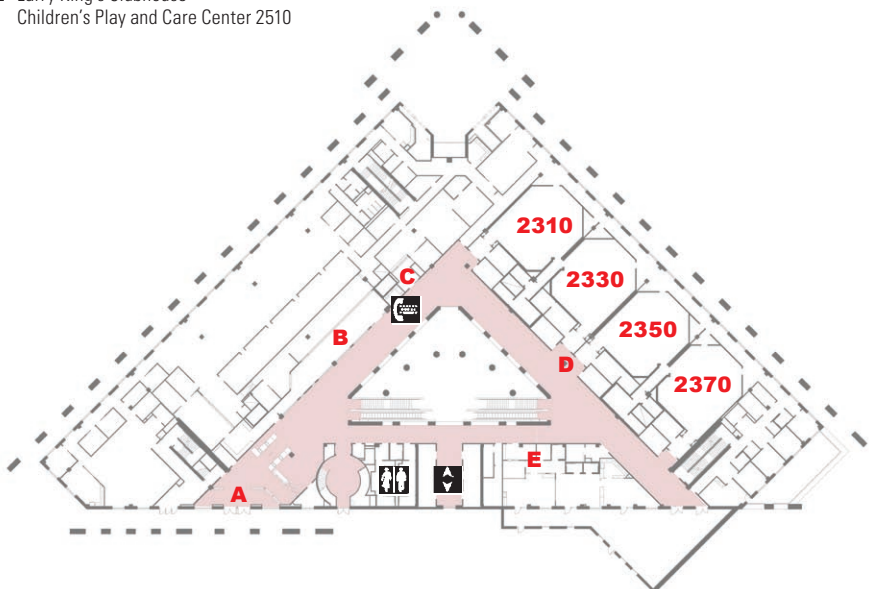
### LEGEND

- Information
- Restrooms
- Telephones
- TTY
- Elevator
- Cafe

Courtrooms are noted by **RED** room numbers

## 2 Plaza Entry Level

- A Plaza Entry
- B Clerk of Court - Criminal 2132
- C Clerk of Court - Bookkeeping 2164
- D Magistrate Courtrooms 2310 - 2370
- E Larry King's Clubhouse - Children's Play and Care Center 2510



## 3

- A Clerk of Court - Administration 3600
- B Clerk of Court - Estates & Special Proceedings 3720
- C Clerk of Court - Civil 3725
- D Self-Serve Center 3350
- E Caseflow Management 3420
- F Family Court Administration 3520



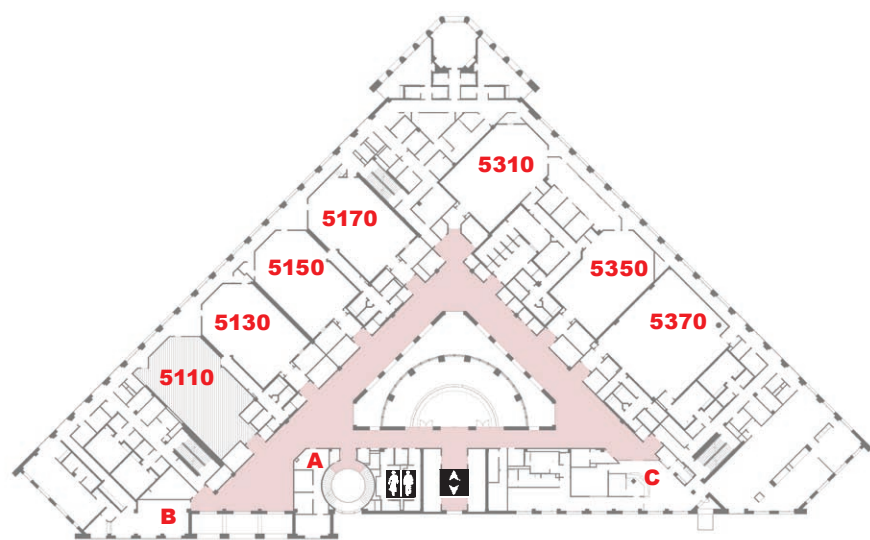
## 4 District Criminal Courts

- A Post-Judgment Services Center 4000
- B Drug Treatment Court Administration 4351
- C Trial Court Administrator 4420



## 5 Superior Criminal Courts

- A Suite 5561
- B Suite 5000
- C Jury Assembly 5450



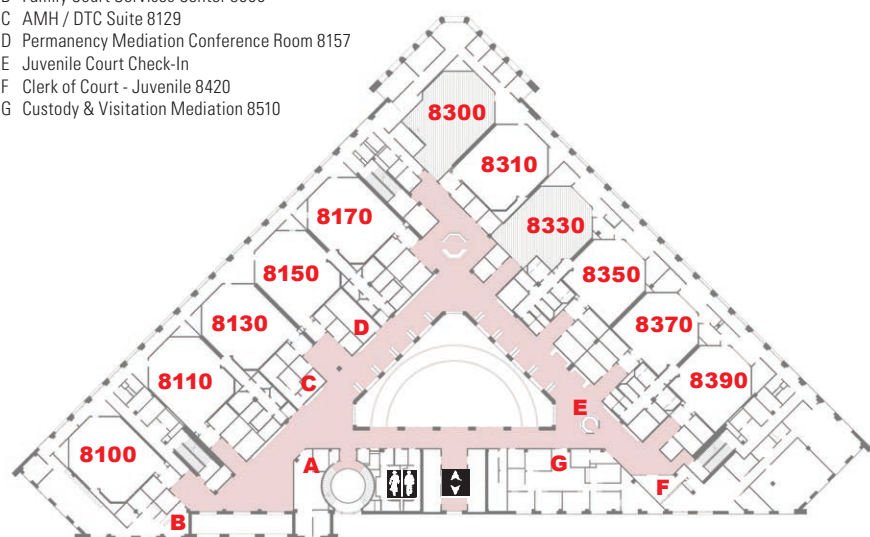
## 6 Civil Courts

- A Court Reporters 6001
- B Attorney Workroom 6000
- C Alternative Dispute Resolution Suite 6510

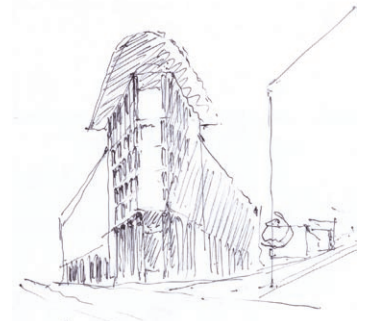
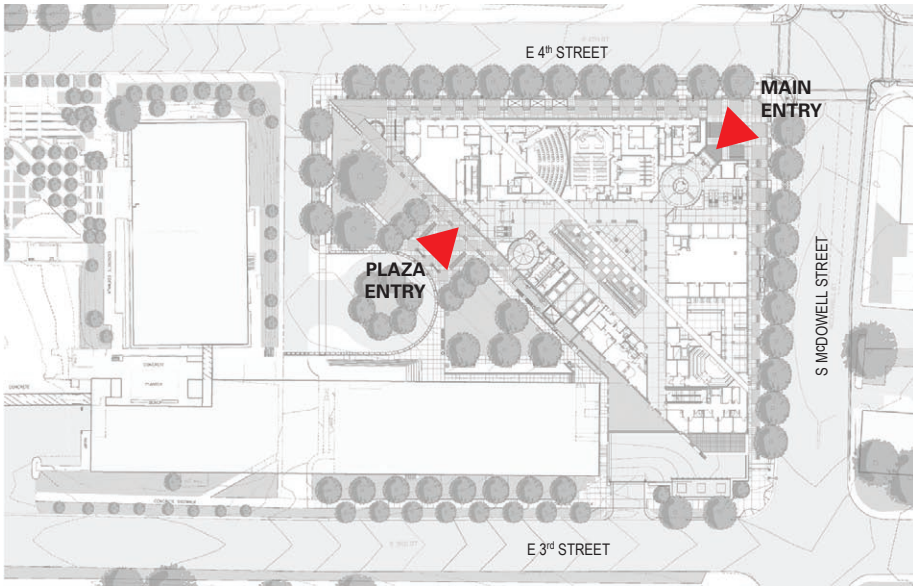


## 8 Family & Juvenile Courts

- A Involuntary Commitment Proceedings 8563
- B Family Court Services Center 8000
- C AMH / DTC Suite 8129
- D Permanency Mediation Conference Room 8157
- E Juvenile Court Check-In
- F Clerk of Court - Juvenile 8420
- G Custody & Visitation Mediation 8510



MECKLENBURG COUNTY COURTHOUSE  
832 EAST 4<sup>TH</sup> STREET



Sketch of new courthouse by Architect Michael McKinnell, 2002

1773 - 2007

THE MECKLENBURG COUNTY COURTHOUSE: 241 YEARS OF SERVICE

In the United States, the courthouse is an edifice in which the Constitution and the rule of law live and breathe on a daily basis. The county courthouse touches all our lives and is a vital part of the franchise of our democratic republic. For 241 years, it has served this purpose in Mecklenburg County!

**The First Courthouse 1766–1810**

From the establishment of Mecklenburg County in 1762 until Charlotte was founded in 1766, Court was held in a variety of homes, taverns and other places. Court was held four times a year and lasted for a day or two each time.

The first courthouse in Mecklenburg County was located in the middle of the intersection of Trade Street and Tryon Street in the small village of Charlotte. This first Courthouse was a log cabin on brick pillars 10 feet tall. In the center of the space under the courthouse was a post marking the middle of the town. Distances to other towns, river fords, etc. were measured from this post. The open space under the courthouse served as a town market for the selling of animals, produce and other goods.

In this first Mecklenburg Courthouse the representatives, meeting on May 19, 1775, first heard the news of Lexington and Concord. They debated and approved the Mecklenburg Declaration of Independence, and heard it read out from the courthouse steps on May 20, 1775. Commissioners met there and wrote

the Mecklenburg Resolves of May 31, and dispatched Captain James Jack to the Continental Congress in Philadelphia with both documents.

When British General Cornwallis entered Charlotte in October of 1780, Colonel Davie and his men fired from the brick columns and stone walls under the courthouse to delay the British advance. Later this was known as the Battle of Charlotte.

**The Second Courthouse 1810–1845**

In the 1875 Charlotte City Directory there is a description of Charlotte 50 years before:

*"The Court House stood in the middle of the public square, formed by the intersection of Trade and Tryon streets; it was a square brick building, hipped roof (the old log building which existed in 1775, had been removed) terminating with a cupola on top. The whipping post, stocks and pillory stood in the middle of the street... in full view of the judge's bench, where he could see his sentence executed. For many years the Sheriff and Clerks of the Superior and County Courts, and the Register of Deeds, kept their offices at their houses in the country... until the Legislature passed an act requiring them to be kept at the Court House. Then it was that the upper story of the Court House was cut up into offices, and thereby spoiling the only good ball room in town, as all the public balls or dances were held in the second story of the Court House, and all the preaching was done in the lower story in the Court room. Ministers of all denominations, when they came to Charlotte, preached in the Court House."*

The courthouse was built by John Dow in 1810 and by 1812 he still had not been paid all he was owed for constructing it.

Over the years the second courthouse was repaired and improved in various ways including "plain Porticoes over each of the Court House doors & have the same finished with steps & painted..." Later the roof was covered with tin and a bell was installed in the cupola.

**The Third Courthouse 1845–1897**

By April 1841 the second courthouse was considered to be in disrepair and too small for the growing county. The Magistrates appointed a Committee to build a new courthouse. In July this committee reported the probable costs; the Magistrates decided not to build a new one and appointed a committee to repair the old one. In October the committee reported that it was impractical to repair the old courthouse and the Magistrates appointed a committee to build a new one.

The third courthouse was constructed on the northeast corner of Trade and Church Streets, where the Marriott Hotel now stands. It was an imposing brick structure, 44 feet wide and 66 feet deep, with four large columns across the front and two flights of stairs in the portico rising to the second floor.

A distinctive feature of the courthouse property was the water tower or standpipe which stood

immediately behind the courthouse. It was a vertical pipe perhaps 17 feet in diameter which stood twice as high as the courthouse. It was built in 1881 when Charlotte first got running water and appears in every existing photograph of the third courthouse.

**The Fourth Courthouse 1897–1928**

The 1870 city directory announced that the County Commissioners had "purchased the grounds and made all arrangements for the erection of a very handsome Court House in the city of Charlotte, which will cost, grounds and all, \$75,000. This building will be located on the corner of Third and Tryon Streets."

The fourth courthouse was finally built in 1896 and was located at 301 South Tryon Street, on the same property where Queens College was established in 1771. This \$52,500 structure was designed by architect Frank Pierce Milburn and was 75 by 120 feet in size. The main entrance had an open portico surmounted by a large dome.

**The Fifth Courthouse 1928–1978**

By 1917 judges and court officials were calling for a new courthouse due to the crowded conditions in the present one. In the early 1920s there was a movement to build a new structure combining the City Hall and the County Courthouse which the County Commissioners supported and the city leaders opposed. They went to Raleigh to get a special law passed to allow this level of City-County consolidation and the question was put to

the voters. The City voters approved the idea, but the county voters did not and the referendum failed.

The City of Charlotte built a new city hall which opened in 1925 while the county courts continued to debate whether to repair the old courthouse or to build a new one. It wasn't until 1928 that the new courthouse opened, at a cost of \$900,000, at 700 East Trade Street, next to the new city hall. The architect was Louis H. Asbury, a Charlotte native who also built the Myers Park United Methodist Church. In an article in Southern Architect, architect M. E. Boyer Jr. extolled the "orderly functions of an excellent courthouse plan" and described the exterior columns and windows in glowing terms, commenting that "The fad of modernistic architecture is again resisted!"

**The Sixth & Seventh Courthouses**

By 1970 the courthouse of 1928 was becoming inadequate to the need of the courts. In 1978, the Civil Courthouse opened at 800 E. Fourth St.; followed soon after by the Criminal Courthouse in 1983, adjacent to the City County Government Building.

On February 9, 2007, the newest Mecklenburg County Courthouse was dedicated. Designed using high quality materials and providing room for growth for many decades, this eighth courthouse should serve the citizens of Mecklenburg County for many years to come.

After 10 years of planning and three years of construction, the eighth Mecklenburg County Courthouse houses all of Mecklenburg County's Courts in a single building for the first time since 1970.

The courtrooms and departments are organized around a central atrium, which soars through six stories and provides natural light and wayfinding orientation throughout the public spaces.

The new Mecklenburg County Courthouse is the result of many hours of hard work on the part of hundreds of individuals from the Courts, the County, the architects, artists and builders all working together.

- BUILDING AREA:** 568,000 gsf
- PROJECT BUDGET:** \$148 million
- BUILDING HEIGHT:** 9 stories
- COURTROOM CAPACITY:** 47 total  
35 finished initially  
4 shelled + 8 future on level 7

**ARCHITECTS**  
Schenkel & Shultz Architects  
HDR Architecture  
Kallmann McKinnell & Wood Architects

**CONSTRUCTION MANAGER**  
FN Thompson Company  
Turner Construction Company  
Walter B Davis

**ARTISTS**  
Helmick + Schecter *The Persistence of Vision*  
Robin Brailsford with Fred Chappell *We Hold These Truths*

BUILDING DIRECTORY

<b>General Court Information</b>	704 686-0400	<b>Jury Service</b>	5450	704 686-0195
<b>Clerk of Superior Courts Office</b>		<b>Magistrates</b>		
Administration	3600 704 686-0420	Civil Small Claims	3725	704 686-0060
Adoptions	3600 704 686-0430	Judicial Hospitalization	3600	704 686-0070
Bookkeeping	2164 704 686-0440			
Cashier	1579 704 686-0450	<b>Sheriff's Office</b>	1325	704 336-8787
Child Support/Family	3725 704 686-0500			
Civil Filing/Processing	3725 704 686-0520	<b>Trial Court Administrator</b>		
Criminal	2132 704 686-0600	Administration	4420	704 686-0260
Estates	3720 704 686-0460	Caseflow Management Division	3420	704 686-0185
Judgments	3725 704 686-0540	Community Access & Outreach Division	4420	704 686-0269
Juvenile	8420 704 686-0620	ADA Compliance		704 686-0268
Personnel	3600 704 686-0470	Interpreter Management		704 686-0268
Small Claims Filing Information	3725 704 686-0560	Attorney Fee Coordination		704 686-0266
Special Proceedings	3720 704 686-0460	Drug Treatment Court Division	4351	704 686-0150
Traffic Citations	704 686-0600	Family Court Division	3520	704 686-0200
		Custody and Visitation Mediation	8510	704 686-0220
<b>Court Childcare Center</b>		Self Serve Center	3350	704 686-0210
Larry King's Clubhouse	2510 704 686-0285	Operations Division		704 686-0267
		Fine Collection Program	4000	704 686-0240
<b>Judges</b>		Jury Management	5450	704 686-0195
District Court	704 686-0101	Post-Judgment Services Center	4000	704 686-0230
Superior Court	704 686-0100			



MECKLENBURG COUNTY COURTHOUSE

832 EAST 4<sup>TH</sup> STREET  
CHARLOTTE