



NORTH CAROLINA COURT OPERATIONS

An Overview, Part One

September 30, 2015

Jon Williams, Chief Reporter

TODAY'S TOPICS

- THE WORK AND THE PEOPLE
- THE TECHNOLOGY
- THE FUNDING

TOPIC: THE WORK AND THE PEOPLE

CLERKS OF SUPERIOR COURT

- Each county elects a Clerk of Superior Court, minimum staff of 5
- Administrative, clerical, and recordkeeping functions of trial courts
- Clerk is Judge of Probate
- Original Jurisdiction: Probate and Estates, Special Proceedings (Condemnation, Adoptions, Partitions, Foreclosures, etc.), may accept guilty pleas or admissions of responsibility and enter judgments in certain cases
- Collection and disbursement of court costs (fees, fines, forfeitures, restitution)

Elected Clerks of Superior Court: 100 FTE

Assistant Clerks (Division Chiefs): 613 FTE

Deputy Clerks: 1,916.85 FTE

Conference of Clerks: 2 FTE

TOTAL: 2,631.85 FTE

MAGISTRATES

Original Jurisdiction:

- Issue Warrants
- Set Bail
- Accept Guilty Pleas for Minor Misdemeanors and Infractions
- May accept waivers for worthless check cases
- Small Claims (\$10,000 or less)
- Landlord Eviction Cases
- Suits for recovery of personal property and mechanics' liens

674.6 FTE

- Minimum of 3 magistrates per county

DISTRICT COURT

- Original Jurisdiction:
 - Misdemeanor cases,
 - Probable cause hearings,
 - Guilty/no contest pleas in certain felony cases
 - Civil cases \$25,000 or less
 - Juvenile Proceedings
 - Domestic Relations
 - Mental Health Hospital Commitments

District Court Judges: 270 FTE

District Court Judicial Staff: 90.5

TOTAL: 360.5 FTE

SUPERIOR COURT

- Original Jurisdiction:
 - All Felony Cases
 - Jury Trials
 - Civil Cases \$25,000 or more
 - Decisions of most administrative agencies

Elected Superior Court Judges: 97 FTE

Special Superior Court Judges: 15 FTE (includes 3 Business Court Judges)

Superior Court Judicial Staff: 193.125 (includes court reporters)

TOTAL: 305.125 FTE

SUPERIOR COURT/BUSINESS COURT

- Special statewide venue of civil Superior Court
- Complex and significant issues of corporate and commercial law assigned to a special judge
- 3 Business Courts Chambers in NC: Wake, Guilford, Mecklenburg
- Cases may be tried in all 100 counties
- 231 pending cases on 12/31/2014
 - 23 on appeal
 - 19 inactive or stayed
- 133 cases closed in 2014
- 122 new cases assigned in 2014

OTHER SPECIAL COURTS ARE NOT AVAILABLE STATEWIDE: *E.G.* FAMILY, VETERANS, DRUG TREATMENT

COURT OF APPEALS



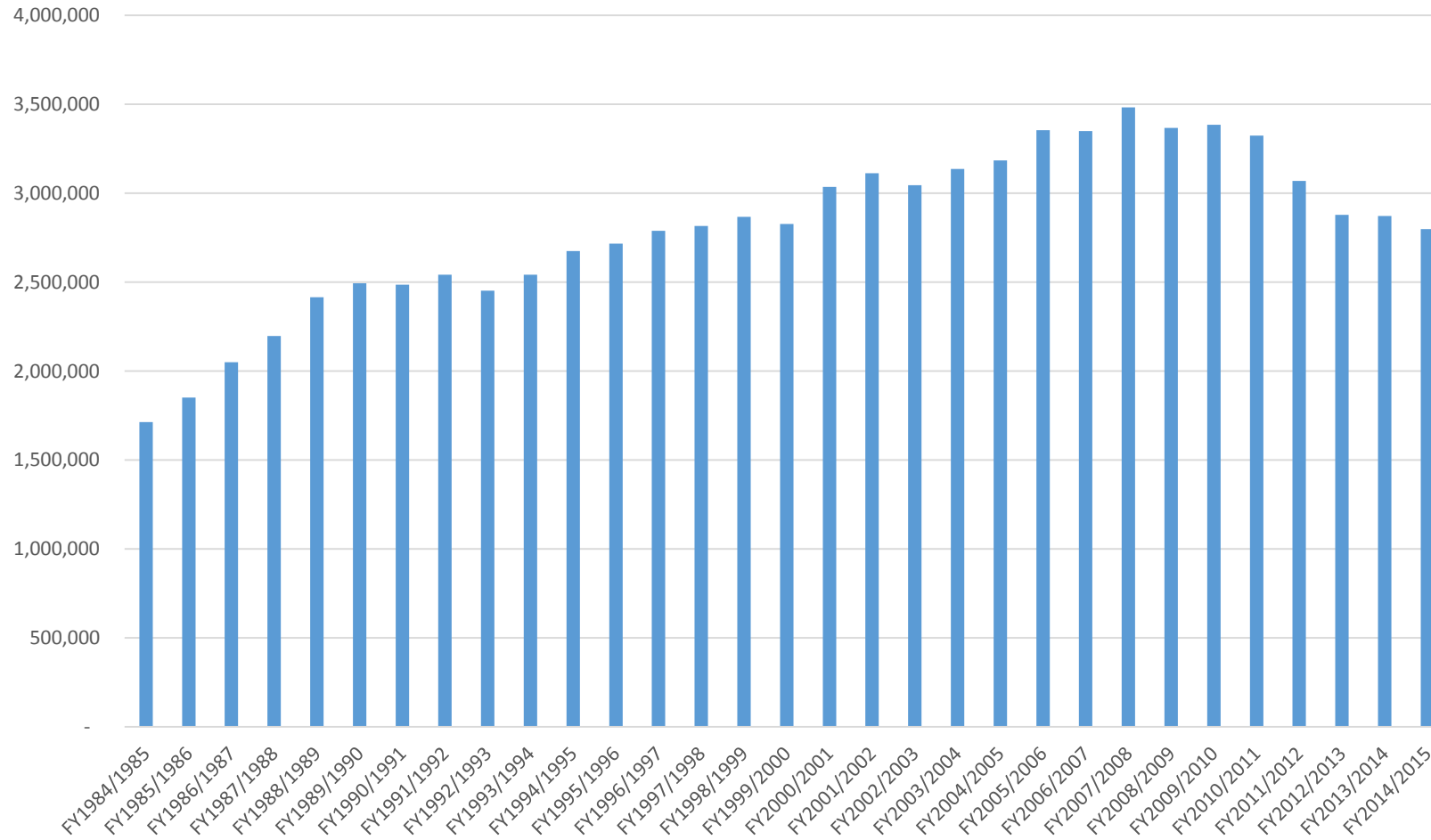
- Civil and Juvenile Appeals from District Courts
- Appeals in non first-degree capital murder criminal cases from Superior Court
- State agency decisions

SUPREME COURT

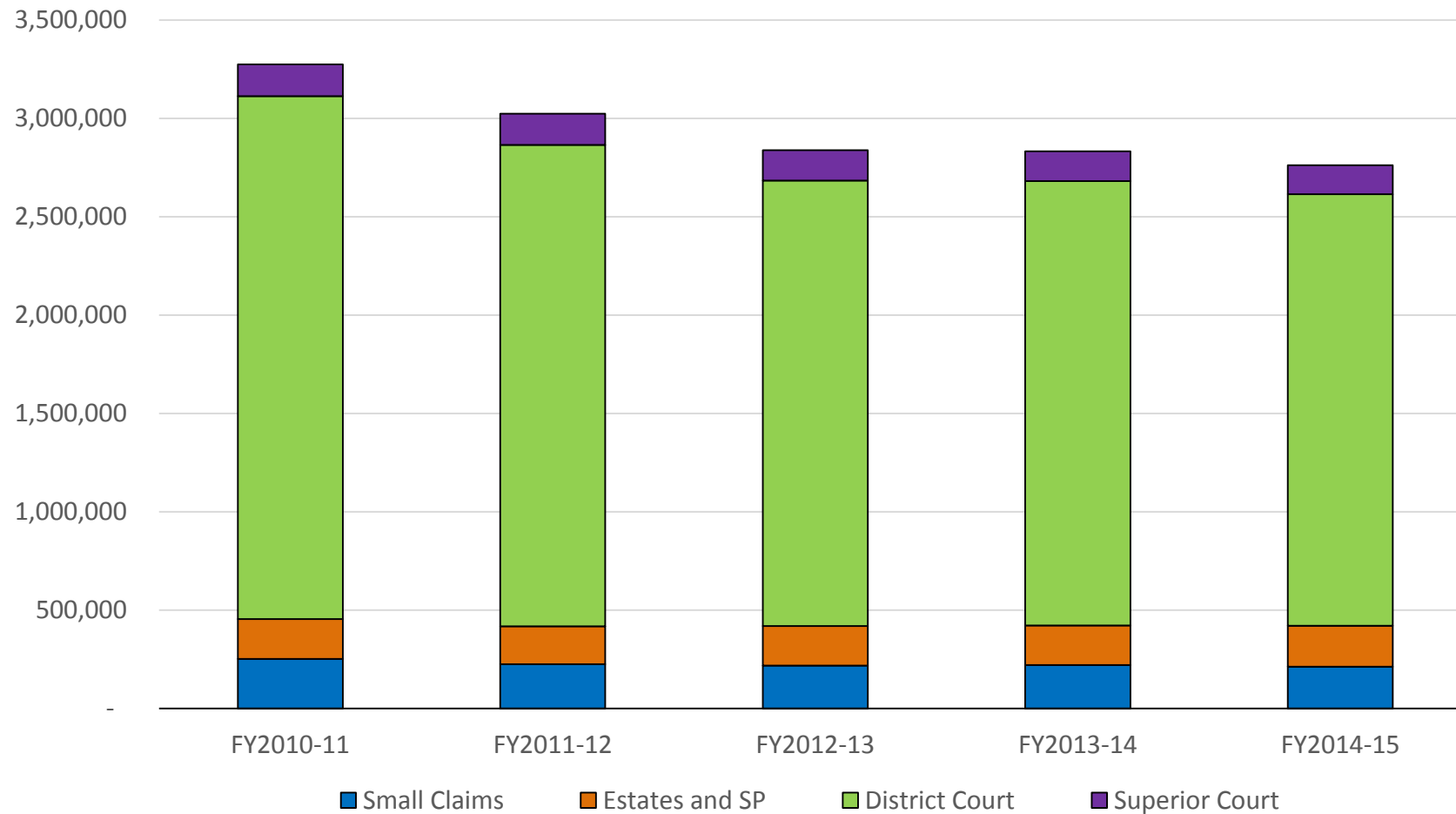


- Constitutional questions
- Cases in which the Court of Appeals has had dissent
- Cases of significant public interest
- Cases involving legal principles of major significance
- Appeals in first-degree capital murder cases in which the defendant has been sentenced to death
- Appeals or final orders in Utilities Commission general rate cases
- Redistricting cases

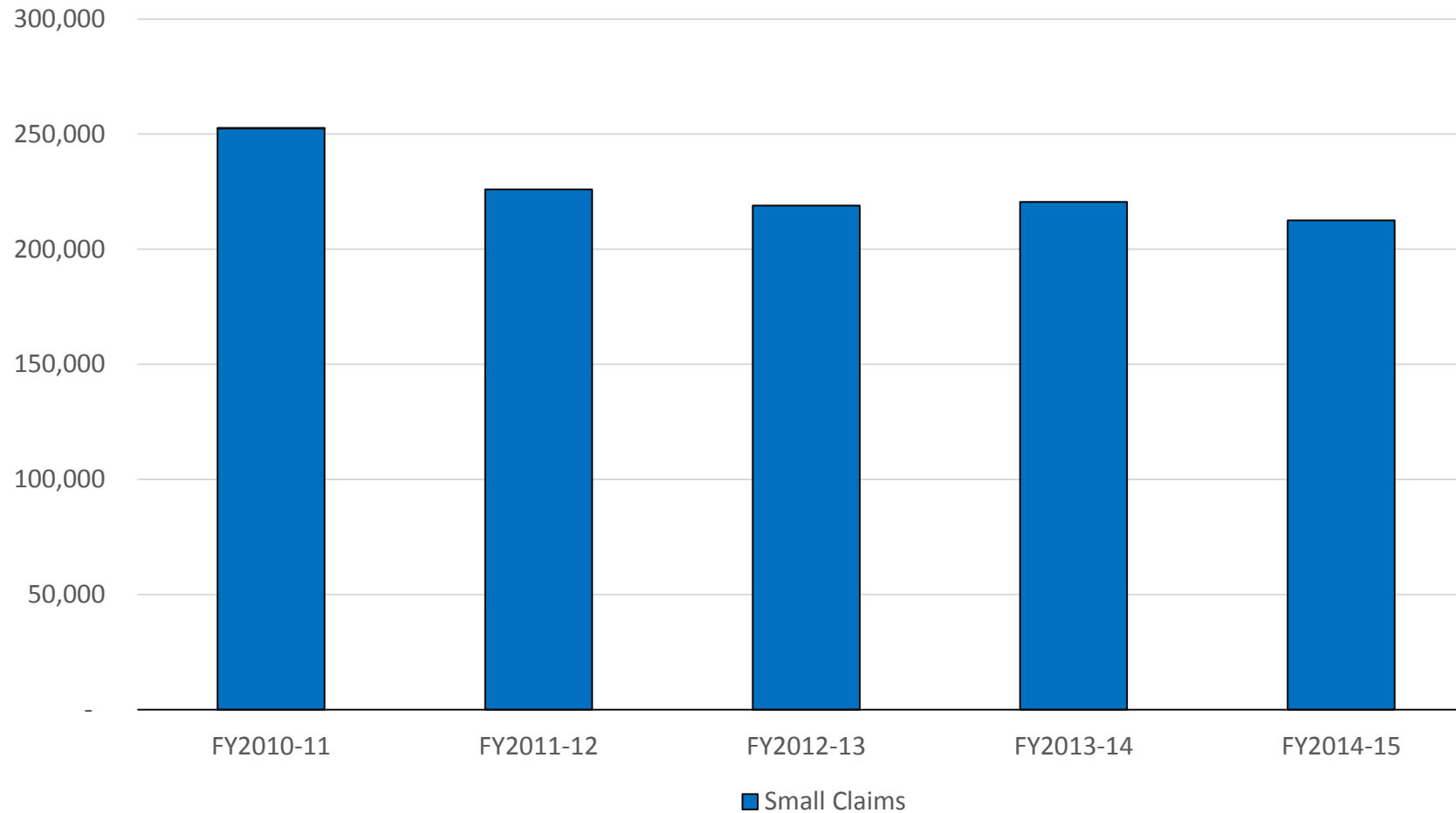
TOTAL FILINGS 1985 - 2015



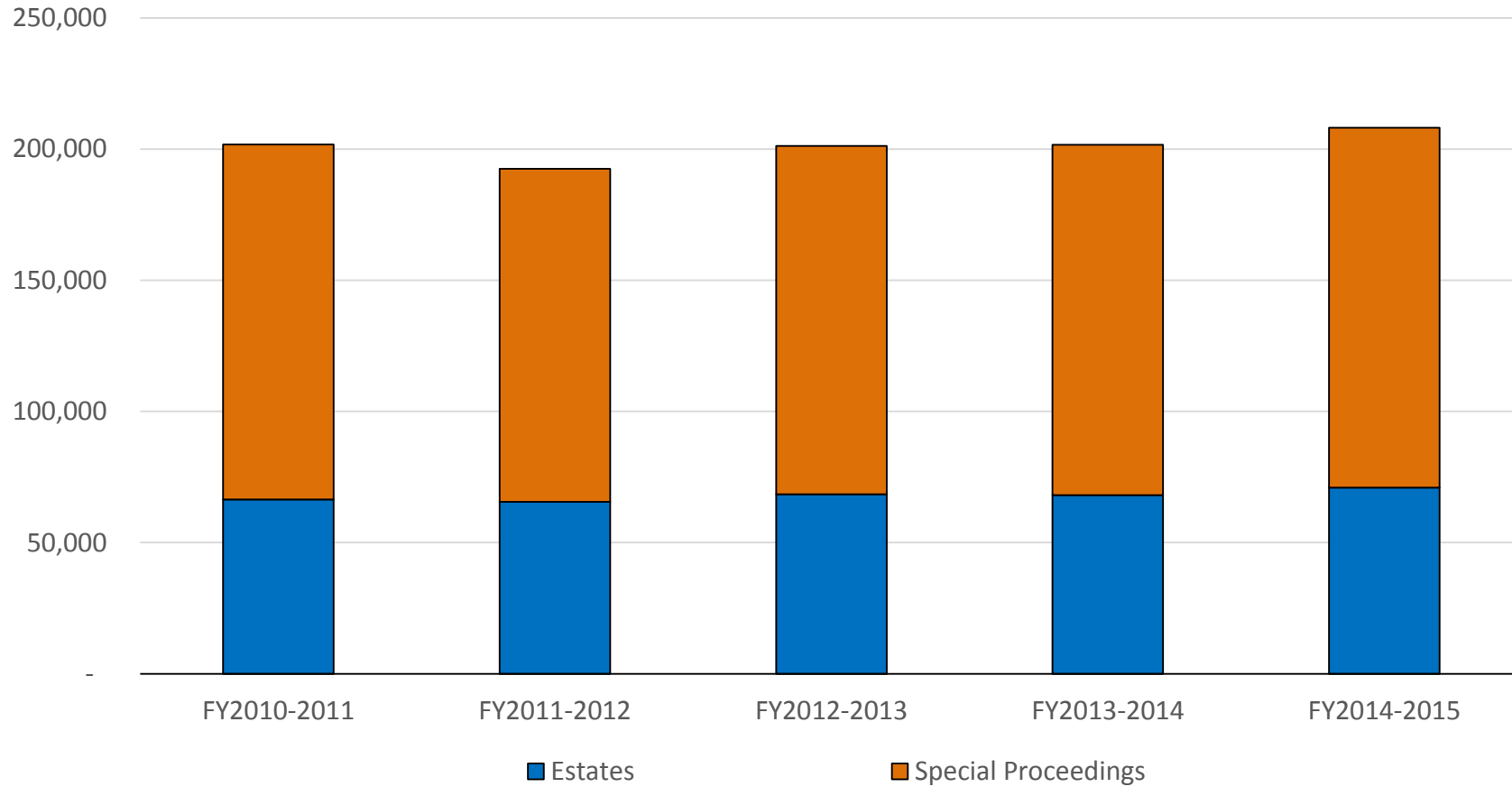
COURT FILINGS, FY2010-11 TO FY2014-15



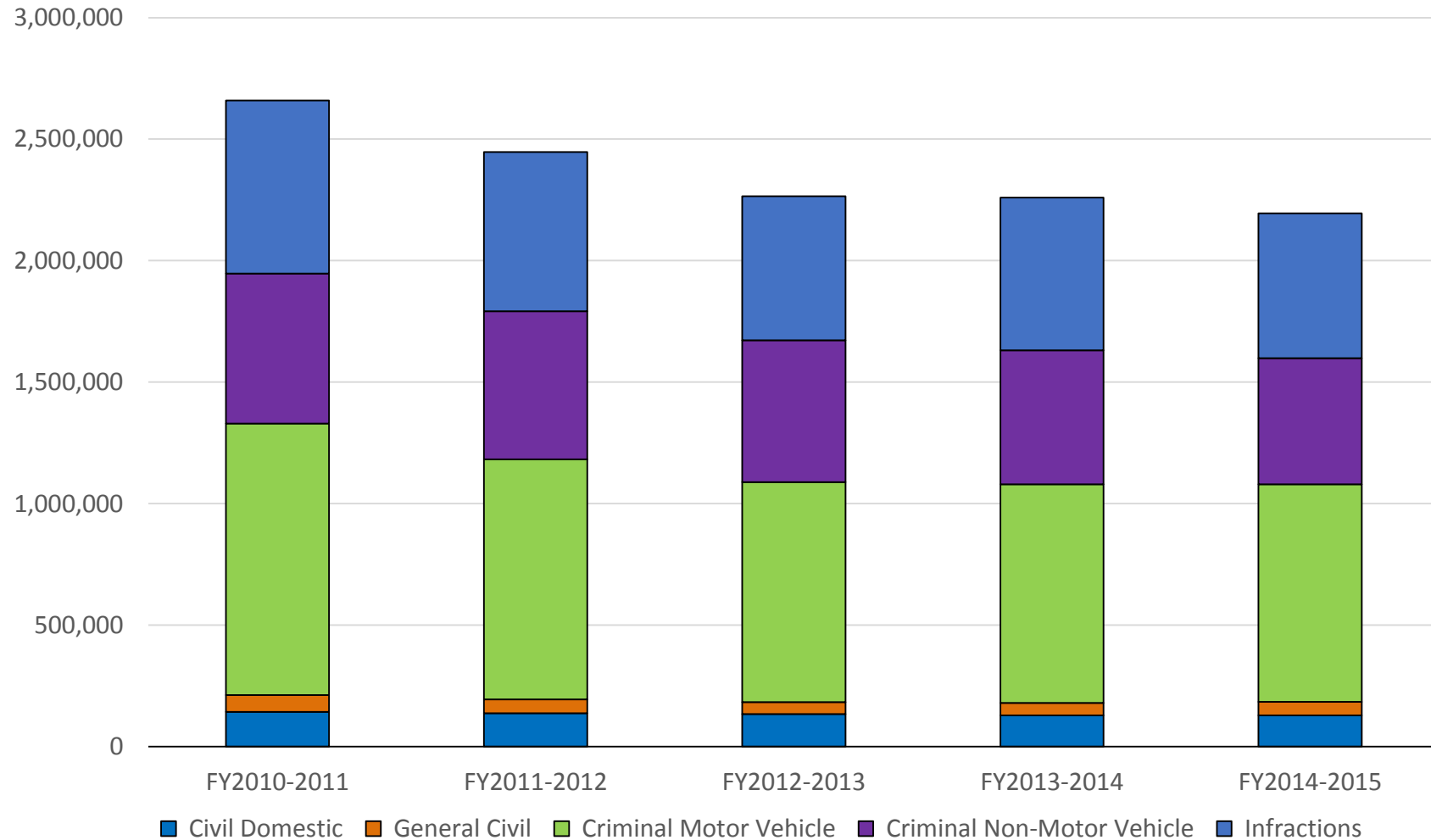
SMALL CLAIMS FILINGS, FY2010-11 TO FY2014-15



ESTATES AND SPECIAL PROCEEDINGS FILINGS FY2010-11 TO FY2014-15



DISTRICT COURT FILINGS, FY2010-11 TO FY2014-15



SUPERIOR COURT FILINGS, FY2010-11 TO FY2014-15

